

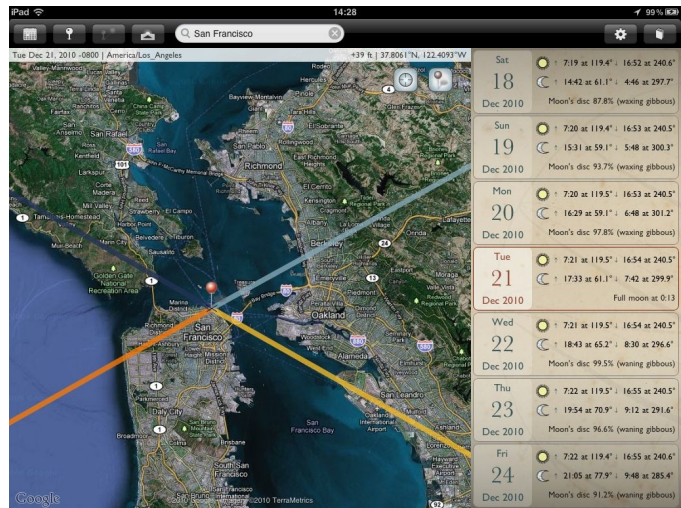
January 11 2011

For Immediate Release

The Photographer's Ephemeris Comes To The iPad

The Photographer's Ephemeris (TPE), the popular, map-based sun and moon planning tool for outdoor photography, has been updated for iPad. With a newly designed user interface providing fast, easy access to key information, TPE for iOS 2.0 makes the most of the iPad's larger display, while maintaining an elegant look and feel.

'Knowing where you should be at the right time is what makes this software incredible,' said Antony Spencer, Landscape Photographer of the Year, 2010. 'You can choose any day of the year, anywhere in the world, and it even changes time zones. It will tell you where the sun will rise, where it will set and where it will be at any given time of the day – it has everything you need to know.' Antony, winner of Take a view, the Landscape Photographer of the Year Award, uses TPE on his iPhone.



TPE for iOS 2.0 makes the most of the iPad's flexible device orientation. In landscape orientation, it provides a week's worth of sun and moon data at once. In portrait mode, minute-by-minute details of sun and moon position, and much more, are available.

TPE for iOS on iPad is as easy to use as the popular desktop version, but has even more functionality. The visual search feature allows photographers to find out exactly when the sun or full/new moon will next appear in a specified direction, making advance shot planning simple.

The Photographer's Ephemeris for iOS 2.0 is a Universal app available on the App Store. For more information, go to <http://photoephemeris.com>.

If you would like to review TPE for iOS, promo codes are available upon request, subject to availability. Please contact us at the e-mail address below

About

The Photographer's Ephemeris is developed by Crookneck Consulting LLC. In addition to a Universal app for iPad, iPhone and iPod Touch, a free version for Windows, OS X and Linux is available at the web-site.

For additional information, including a logos and screenshots pack, please go to <http://photoephemeris.com/about>.

Further information on Antony Spencer's photography is available at <http://antonymspencer.com>.

Contact Information

Alison Craig
Crookneck Consulting LLC
alison@crookneckconsulting.com
+1 303 800 0976

